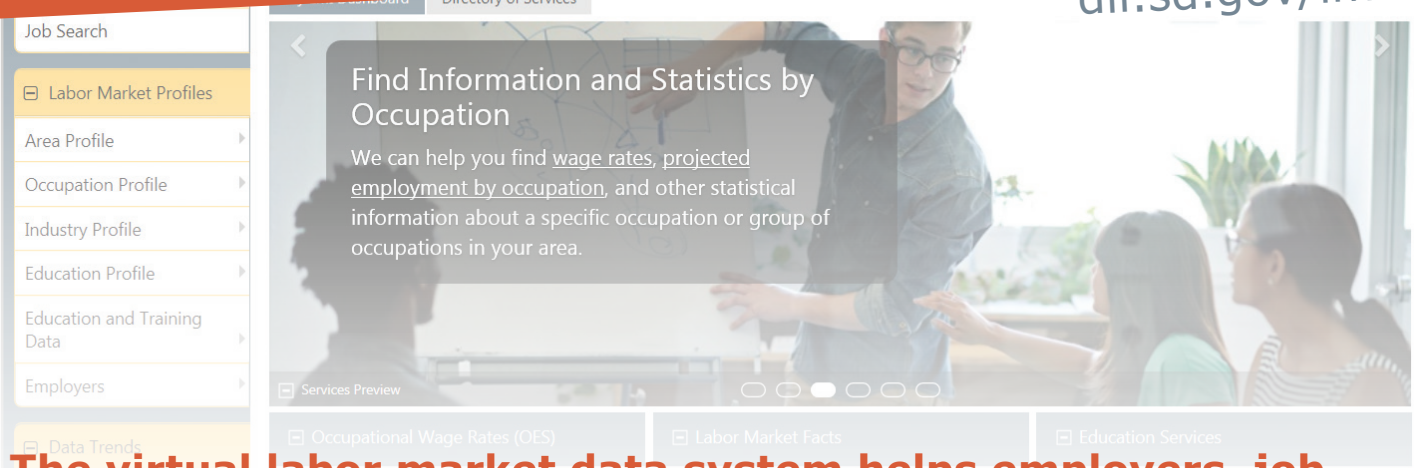


Make informed decisions with the Virtual Labor Market Data System

dlr.sd.gov/lmic



The virtual labor market data system helps employers, job seekers and career planners succeed in the labor market.

- Explore wage, labor force, occupation, industry and population data.
- Use tables, graphs and maps to visualize the data.
- Create customized profiles by area, industry or occupation.

survey says: Findings from the Labor Market Information Center's recent survey on the Virtual Labor Market Data System:

Most used by business/employers & government

Other users: educators, training providers and career counselors, students, job seekers, researchers, media, workforce and economic developers

Most popular data occupational wages & unemployment rate/labor force

Other data used: worker or establishment industry data, trends by occupation or industry (projections), area occupational profiles, industry profiles, income, population, education and training data, commuting patterns, Consumer Price Index, staffing patterns

✓ at least **75%**
said the **information** is
easy to understand and
reliable.

✓ **64%**
said the system **met their**
needs extremely well or
very well.

✓ **62%**
were **extremely satisfied**
or **very satisfied** with its
ease of use.



SOUTH DAKOTA
DEPT. OF LABOR
& REGULATION

Explore the system's wealth of data today!
dlr.sd.gov/lmic

Auxiliary aids and services available upon request to individuals with disabilities. State and federal laws require the Department of Labor and Regulation to provide services to all qualified persons without regard to race, color, creed, religion, age, sex, ancestry, national origin, or disability. USDOL funded.

7/2017